

2023

Guida Prodotti

Product Guide

Guía de Productos

Guide Produits



Ed. 1/2023

Irrigation

Since 1987, for over 35 years, Tecnidro designs, develops, manufactures and markets automatic hydraulic valves and water control systems all over the world.

The company, founded in 1897 from Eng. Alberto Lodolo and located in northern Italy in the city of Genoa, is well known all over the world for the versatility and quality of its products. Tecnidro is the manufacturer of the largest control valve in the world reaching a nominal diameter of 1400 mm (56").

Tecnidro Products are continuously controlled and upgraded by our team of engineers and technicians using advanced manufacturing technologies and testing on our high performance test bench.

Main fields of application of Tecnidro Products are irrigation, waterworks, water supply and distribution, buildings & construction, water treatment, fire protection systems, fuel stock plants and water metering.



Certificates & Approvals



PATENTED

International
Patented
Products

Alcuni dei prodotti presenti in questo catalogo sono coperti da brevetti internazionali.

Some of the products in this catalog are covered by international patents.

Certains des produits de ce catalogue sont couverts par des brevets internationaux.

Algunos de los productos de este catálogo están cubiertos por patentes internacionales.



ISO
9001:2015

CQ

ISO Certified
Quality
Management System



ISO
14001:2015

ENV

ISO Certified
Environmental
Management System



P.E.D.
2014/68/UE

CE

CE Marking
European Directive
2014/68/UE (P.E.D.)



MI-001
2014/32/UE

MID

MID Certified
Water Meters



ISO
16399:2014

MET

Approved
Irrigation Hydrants
and Water Meters



ISO
1074:2004

PRO

Approved
Valves for
Water Supply

INDEX

Valvole Idrauliche in Plastica

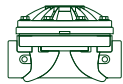
Hydraulic plastic valves / Válvulas hidráulicas plásticas / Vannes hydrauliques plastiques


ING

IDROMEMBRANA® Series 4


IN

IDROMEMBRANA® Series 6


IP

IDROMEMBRANA® Series 10

Contatori per Acqua in Plastica

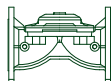
Plastic water meters / Contadores de agua plásticos / Compteurs d'eau plastiques


TW-N

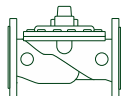
Tangential Series 14

Valvole Idrauliche Metalliche

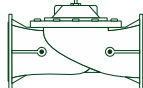
Hydraulic metal valves / Válvulas hidráulicas metálicas / Vannes hydrauliques métalliques


IM

IDROMEMBRANA® Series 16


HC

HYDROMODUL® C Series 22


HM

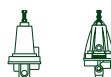
HYDROMODUL® Series 24

Solenoidi, Piloti e Accessori

Solenoids, pilots & accessories / Solenoides, pilotos y accesorios / Solénoïdes, pilotes et accessoires


3 & 2-Way EL / PROG

.... 26


3-Way RP / SP / QP / SR
2-Way RP / SP / QP / SR
Relay SH

.... 27


Float GAL / GAD / ALT
Acc. CM4V / FIL / MAN

.... 28


Fitting RP / ST / OG / TU

.... 29

Valvole e Centraline per Filtri

Filtration valves & controllers / Válvulas y programadores filtros / Vannes et programmeurs filtres


3V

Series

.... 30


TIC

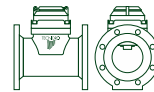
Series

TIC-SYS

.... 32

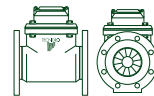
Contatori per Acqua Metallici

Metal water meters / Contadores de agua metálicos / Compteurs d'eau métalliques


TW

Tangential Series

.... 34

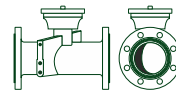

AW

Woltman Series

.... 36

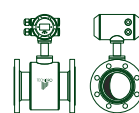

MWA

Multi-jet Series


UWM

Ultrasonic Series

.... 38

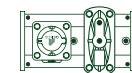

SEA

Electromagnetic Series

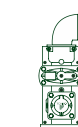
.... 39

Idranti/Idrometri Irrigui

Irrigation hydrants, hydrometers / Hidrantes, Hidrómetros de riego / Bornes, Hydromètres d'irrigation


IDR
IDU

IDROCONTATORE® Series 40


IER

IDROCONTATORE® Series


I2C
I2U

IDROCONTATORE® Series

Gestione delle Reti Idriche

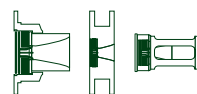
Water networks management / Gestión de redes hidráulicas / Gestion des réseaux hydrauliques


Radio HYDRONET®
Gprs AMR
Card ACQUACREDIT®

.... 42

Limitatori di Portata

Flow limiters / Limitadores de caudal / Limiteurs de débit

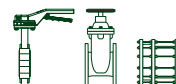

LIS / LIM / LIT
LIB / LIC

Series

.... 44

Valvole di Sezionamento e Sfiato

Sectioning & Air vent / Seccionamiento y ventosas / Sectionnement et ventouses


BFV / SAR / DJ3

Series

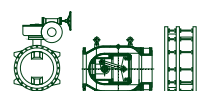
.... 45


FIY / CHK / SFI

Series

Valvole di Regolazione

Regulating valves / Válvulas de regulación / Vannes de régulation

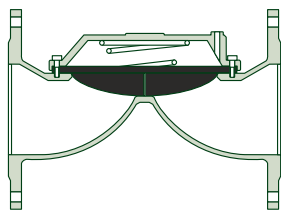

BFV / NDL / DJ3

Series

.... 46

Metal Diaphragm Valves

IM Series

P_{max} 16 bar

✓ Standard

⊗ Options

	EN GJL250		EN GJS400 ASTM A536
	ISO PN16		ISO PN10 ANSI150
	BSP F		NPT F
	Standard diaphragm		Soft/Hard diaphragm



Dati tecnici

Series IM

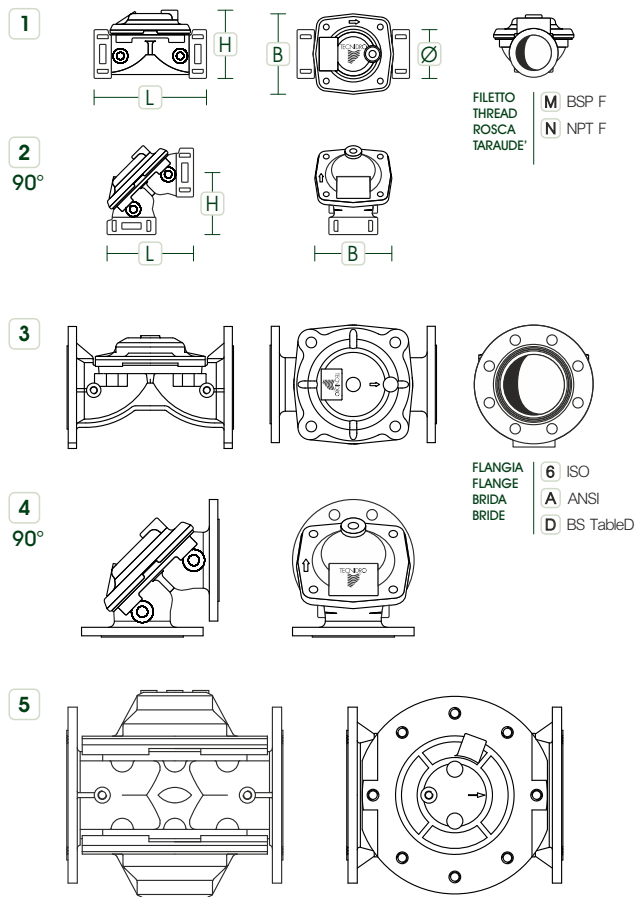
Technical data / Datos técnicos / Données techniques

FILETTO / THREAD / ROSCA / TARAUDE'							Q _n (*)	
DN-Ø	Mod.	Type	L	H	B	P	ON-OFF	REG.
(mm) - (inch)			(mm)	(mm)	(mm)	(Kg)	(m³/h)	(m³/h)
25 1"	1"	1	116	50	70	0.9	12	25
32 1"¼	1"¼	1	175	100	120	3.0	30	60
40 1"½	1"½	1	175	100	120	3.0	33	65
50 2"	2"	1	175	100	120	3.4	40	80
50 2"	2"E90°	2	128	90	120	3.2	44	90
65 2"½	2"½	1	200	115	120	4.0	48	95
80 3"	3"A	1	205	115	120	5.3	48	95
80 3"	3"C	1	230	135	165	8.2	70	150
80 3"	3"E90°	2	188	139	150	8.0	75	160
100 4"	4"F	1	355	170	210	17.0	95	195

FLANGIA / FLANGE / BRIDA / BRIDE							Qn (*)	
DN-Ø	Mod.	Type	L	H	B	P	ON-OFF	REG.
(mm) - (inch)			(mm)	(mm)	(mm)	(Kg)	(m³/h)	(m³/h)
50 2"	50	3	175	165	165	6.5	40	80
65 2"½	65	3	175	165	165	8.0	48	95
80 3"	80P	3	220	200	200	11.0	70	150
80 3"	80E 90°	4	220	120	200	12.0	75	160
80 3"	80	3	280	200	210	12.8	85	170
100 4"	100	3	300	220	220	15.5	95	195
100 4"	100E 90°	4	245	135	220	19.0	100	200
125 5"	125	3	325	250	250	22.5	110	210
150 6"	150	3	350	320	320	41.5	190	375
200 8"	200	3	400	340	340	60.0	210	425
250 10"	250	3	450	470	405	86.0	350	700
300 12"	300	3	500	500	460	115.0	450	900
350 14"	350	5	550	520	520	175.0	750	1.600
400 16"	400	5	600	580	580	220.0	900	1.800

(*) Portate Consigliate

Suggested Flow Rates / Caudales Aconsejadas / Débits Conseillés

Q_n [ON-OFF] → ΔP ≈ 0.2 (bar)Q_n [REGULATION] → ΔP ≈ 0.8 (bar)

DN80- 3" Guida alla selezione del modello

Model selection guide / Guía de selección de modelos / Guide de sélection des modèles

Model	Q (m³/h)	Portata / Flow rate / Caudal / Débit
3"A	20 < Q < 90	Bassa / Low / Bajo / Faible
3"C / DN80P	40 < Q < 120	Media / Medium / Medio / Moyen
3"E / DN80E	50 < Q < 130	Media / Medium / Medio / Moyen
3"F / DN80	60 < Q < 180	Alta / High / Elevado / Élevé

Valvola Base

mod.IM-IDR

Basic valve / Válvula básica / Vanne nue

FILETTO / THREAD / ROSCA / TARAUDÉ

BSP F **M**

NPT F **N**

FLANGIA / FLANGE / BRIDA / BRIDE

ISO **6**

ANSI **A**

DN-Ø (mm)-(inch)	Mod.	CODE IMIIDRO
25 1"	1"	0001M
32 1 1/4"	1 1/4"	1 1/4M
40 1 1/2"	1 1/2"	1 1/2M
50 2"	2"	0002M
50 2"	2"E 90°	002EM
65 2 1/2"	2 1/2"	2 1/2M
80 3"	3"A	003AM
80 3"	3"C	003CM
80 3"	3"E 90°	003EM
100 4"	4"F	004FM

DN-Ø (mm)-(inch)	Mod.	CODE IMIIDRO
50 2"	50	000506
65 2 1/2"	65	000656
80 3"	80P	0080P6
80 3"	80E 90°	0080E6
80 3"	80	000806
100 4"	100	001006
100 4"	100E 90°	0100E6
125 5"	125	001256
150 6"	150	001506
200 8"	200	002006
250 10"	250	002506
300 12"	300	003006
14"/16"	350/400	



IM-IDR

Kit Parti Interne

mod.KIMI

Internal parts kit / Kit partes internas / Kit pièces internes

CODE	Mod.	Pressure Range (bar)
KIMI50N000025	1"	0.8+16.0
KIMI40N032065	1 1/4" - 1 1/2" - 2" - 2"E - 2 1/2" - 3"A - 50 - 65	Low Pressure 0.4+6.0
KIMI60N032065	1 1/4" - 1 1/2" - 2" - 2"E - 2 1/2" - 3"A - 50 - 65	1.5+16.0
KIMI80N032065	1 1/4" - 1 1/2" - 2" - 2"E - 2 1/2" - 3"A - 50 - 65	High Rate 6.0+16.0
KIMI50N08000C	3"C - 3"E - 80P - 80E	Low Pressure 0.9+6.0
KIMI60N08000C	3"C - 3"E - 80P - 80E	1.5+16.0
KIMI7LN080100	80 - 100	Low Pressure 0.5+10.0
KIMI70N080125	3"F - 4"F - 80 - 100 - 100E - 125	1.5+16.0
KIMI80N080125	3"F - 4"F - 80 - 100 - 100E - 125	High Rate 6.0+16.0
KIMI50N150200	150 - 200	Low Pressure 0.7+6.0
KIMI70N150200	150 - 200	1.5+16.0
KIMI80N150200	150 - 200	High Rate 6.0+16.0
KIMI50N250300	250 - 300	Low Pressure 0.7+6.0
KIMI80N250300	250 - 300	6.0+16.0
KIMI50N350400	350 - 400	Low Pressure 0.7+6.0
KIMI80N350400	350 - 400	6.0+16.0

KIT



Molla

Spring
Muelle/Resorte
Ressort

+



Supporto

Support
Soporte
Support

+



Membrana

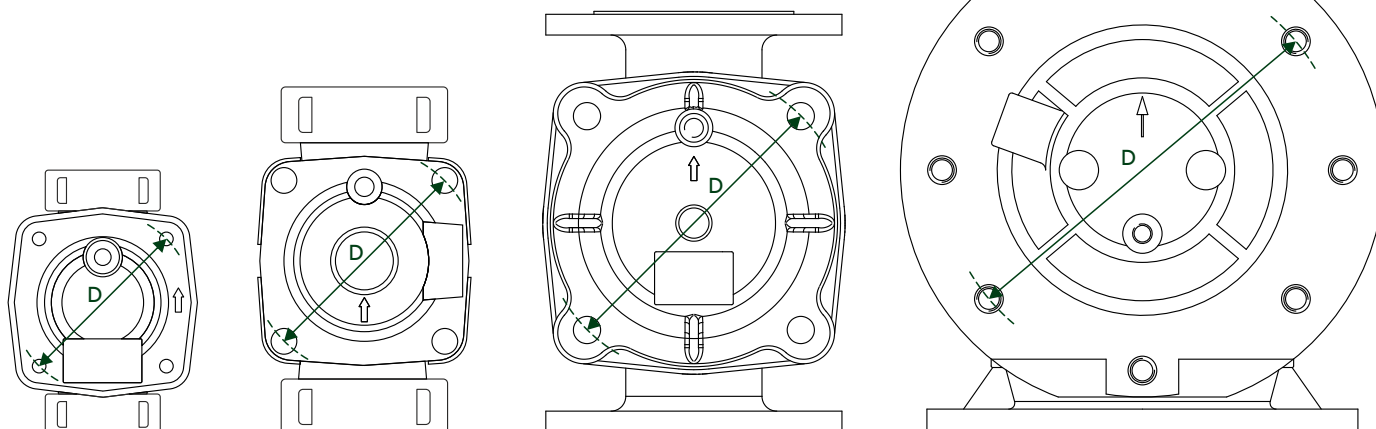
Diaphragm
Diafragma
Membrane

KIMI

Identificazione Kit

Kit identification / Identificación kit / Identification kit

D (mm)	Mod.
113	1 1/4" - 1 1/2" - 2" - 2"E - 2 1/2" - 3"A - 50 - 65
150	3"C - 3"E - 80P - 80E
200	3"F - 4"F - 80 - 100 - 100E - 125
294	150 - 200
380	250 - 300 - 350 - 400





IM-CM4V

✓ Mod.CM4V
3-way
Open/Close/Auto
PN16

Comando Manuale

mod.IM-CM4V

Manual Override / Mando Manual / Commande Manuelle

FILETTO / THREAD / ROSCA / TARAUDE'	BSP F M	NPT F N	FLANGIA / FLANGE / BRIDA / BRIDE	ISO 6	ANSI A
DN-Ø (mm)-(inch)	Mod.	CODE IMCM4V	DN-Ø (mm)-(inch)	Mod.	CODE IMCM4V
25 1"	1"	0001M	50 2"	50	000506
32 1"¼	1"¼	1"¼4M	65 2"½	65	000656
40 1"½	1"½	1"½2M	80 3"	80P	0080P6
50 2"	2"	0002M	80 3"	80E 90°	0080E6
50 2"	2"E 90°	002EM	80 3"	80	000806
65 2"½	2"½	2"½2M	100 4"	100	001006
80 3"	3"A	003AM	100 4"	100E 90°	0100E6
80 3"	3"C	003CM	125 5"	125	001256
80 3"	3"E 90°	003EM	150 6"	150	001506
100 4"	4"F	004FM	200 8"	200	002006
			250 10"	250	002506
			300 12"	300	003006
			14"/16"	350/400	

Elettroidraulica

mod.IM-EL

Electrohydraulic / Electrohidráulica / Électro-hydraulique

FILETTO / THREAD / ROSCA / TARAUDE'	BSP F M	NPT F N	FLANGIA / FLANGE / BRIDA / BRIDE	ISO 6	ANSI A
DN-Ø (mm)-(inch)	Mod.	CODE IMIEL00	DN-Ø (mm)-(inch)	Mod.	CODE IMIEL00
25 1"	1"	0001M	50 2"	50	000506
32 1"¼	1"¼	1"¼4M	65 2"½	65	000656
40 1"½	1"½	1"½2M	80 3"	80P	0080P6
50 2"	2"	0002M	80 3"	80E 90°	0080E6
50 2"	2"E 90°	002EM	80 3"	80	000806
65 2"½	2"½	2"½2M	100 4"	100	001006
80 3"	3"A	003AM	100 4"	100E 90°	0100E6
80 3"	3"C	003CM	125 5"	125	001256
80 3"	3"E 90°	003EM	150 6"	150	001506
100 4"	4"F	004FM	200 8"	200	002006
			250 10"	250	002506
			300 12"	300	003006
			14"/16"	350/400	



IM-EL

✓ Mod.EL
3-way N.O.
24v AC 50/60Hz
PA (nylon)
PN10

Mod.EL-BI
3-way Latch
9-12v DC
PA (nylon)
PN10

Mod.EL-M
3-way N.O.
24v AC 50/60Hz
brass
PN10

Mod.EL-BA Acqua-tec
3-way Latch + CM
12-24v DC
PA (nylon)
PN10

IM-EL + **Opzioni** / Options / Opciones / Options

↔ **EL-BI** Solenoide Bistabile / Latch solenoid
Solenoide Latch / Solenoide Bistable 9-12vDC

↔ **EL-BA** Solenoide Acqua-tec / Acqua-tec Solenoid
Solenoide Acqua-tec / Solenoide Acqua-tec 12-24vDC

↔ **EL-M** Solenoide / Solenoid
Solenoide / Solenoide 24vAC

+ **CM4V** + Comando manuale / + Manual override
+ Mando manual / + Commande manuelle

Comando Remoto

mod.IM-SHCP

Remote Control / Mando Remoto / Commande à Distance

FILETTO / THREAD / ROSCA / TARAUDE'	BSP F M	NPT F N	FLANGIA / FLANGE / BRIDA / BRIDE	ISO 6	ANSI A
DN-Ø (mm)-(inch)	Mod.	CODE IMISHCP	DN-Ø (mm)-(inch)	Mod.	CODE IMISHCP
25 1"	1"	0001M	50 2"	50	000506
32 1"¼	1"¼	1"¼4M	65 2"½	65	000656
40 1"½	1"½	1"½2M	80 3"	80P	0080P6
50 2"	2"	0002M	80 3"	80E 90°	0080E6
50 2"	2"E 90°	002EM	80 3"	80	000806
65 2"½	2"½	2"½2M	100 4"	100	001006
80 3"	3"A	003AM	100 4"	100E 90°	0100E6
80 3"	3"C	003CM	125 5"	125	001256
80 3"	3"E 90°	003EM	150 6"	150	001506
100 4"	4"F	004FM	200 8"	200	002006
			250 10"	250	002506
			300 12"	300	003006
			14"/16"	350/400	



IM-SHCP

✓ Mod.SHCP
3-way N.O.&N.C.
10 m.c.a. (1 bar)
PA (nylon)
PN10

Mod.SHOB
3-way N.O.&N.C.
10 m.c.a. (1 bar)
brass
PN10

IM-SHCP + **Opzioni** / Options / Opciones / Options

↔ **SHOB** Relé idraulico ottone / Brass hydraulic relay
Relé hidráulico latón / Relais hydraulique laiton

+ **RP3P** + Pilota 3 vie plastico / + 3-way plastic pilot
+ Piloto 3 vías plástico / + Pilote 3 voies plastique

Riduzione Pressione (3-way)

mod.IM-RP3P

Pressure Reducing / Reductora de Presión / Réduction de Pression

FILETTO / THREAD / ROSCA / TARAUDE'	BSP F M	NPT F N	FLANGIA / FLANGE / BRIDA / BRIDE	ISO 6	ANSI A
DN-Ø (mm)-(inch)	Mod.	CODE	DN-Ø (mm)-(inch)	Mod.	CODE
25 1"	1"	0001M	50 2"	50	000506
32 1"¼	1"¼	1"1/4M	65 2"½	65	000656
40 1"½	1"½	1"1/2M	80 3"	80P	0080P6
50 2"	2"	0002M	80 3"	80E 90°	0080E6
50 2"	2"E 90°	002EM	80 3"	80	000806
65 2"½	2"½	2"1/2M	100 4"	100	001006
80 3"	3"A	003AM	100 4"	100E 90°	0100E6
80 3"	3"C	003CM	125 5"	125	001256
80 3"	3"E 90°	003EM	150 6"	150	001506
100 4"	4"F	004FM	200 8"	200	002006
			250 10"	250	002506
			300 12"	300	003006
			14"/16"	350/400	



IM-RP3P



PN10

Mod.RP3P
3-way
1,0+5,5 bar
PA (nylon)



PN16

Mod.RP3B
3-way
1,0+5,5 bar
brass



PN16

Mod.CM4V
3-way
Open/Close/Auto

+ IM-RP3P + Opzioni / Options / Opciones / Options

- + **RP3B** Pilota 3 vie ottone / 3-way brass pilot
Piloto 3 vías latón / Pilote 3 voies laiton
- + **SP3P** + Pilota sostegno / + Sustaining pilot
+ Piloto sostenedor / + Pilote mainteneur

- + **EL** + Solenoide / + Solenoid
+ Solenoide / + Solénoïde 24vAC
- + **EL-BI** + Solenoide Bistabile / + Latch solenoid
+ Solenoide Latch / + Solénoïde Bistable 9-12vDC

Riduzione Pressione (2-way)

mod.IM-RP2B

Pressure Reducing / Reductora de Presión / Réduction de Pression

FILETTO / THREAD / ROSCA / TARAUDE'	BSP F M	NPT F N	FLANGIA / FLANGE / BRIDA / BRIDE	ISO 6	ANSI A
DN-Ø (mm)-(inch)	Mod.	CODE	DN-Ø (mm)-(inch)	Mod.	CODE
25 1"	1"	0001M	50 2"	50	000506
32 1"¼	1"¼	1"1/4M	65 2"½	65	000656
40 1"½	1"½	1"1/2M	80 3"	80P	0080P6
50 2"	2"	0002M	80 3"	80E 90°	0080E6
50 2"	2"E 90°	002EM	80 3"	80	000806
65 2"½	2"½	2"1/2M	100 4"	100	001006
80 3"	3"A	003AM	100 4"	100E 90°	0100E6
80 3"	3"C	003CM	125 5"	125	001256
80 3"	3"E 90°	003EM	150 6"	150	001506
100 4"	4"F	004FM	200 8"	200	002006
			250 10"	250	002506
			300 12"	300	003006
			14"/16"	350/400	



IM-RP2B



PN16

Mod.RP2B
2-way
1,0+11,0 bar
brass



PN16

Mod.RP2M
2-way
1,0+11,0 bar
AISI304 SS

+ IM-RP2B + Opzioni / Options / Opciones / Options

- + **RP2M** Pilota 2 vie inox / 2-way stainless steel pilot
Piloto 2 vías inoxidable / Pilote 2 voies inox
- + **SP2N** + Pilota sostegno / + Sustaining pilot
+ Piloto sostenedor / + Pilote mainteneur

- + **EL2** + Solenoide 2 vie ottone / + 2-way brass solenoid
+ Solenoide 2 vías latón / + Solénoïde 2 voies laiton

Programmabile

mod.IM-PROG

Programmable / Programable / Programmable

FILETTO / THREAD / ROSCA / TARAUDE'	BSP F M	NPT F N	FLANGIA / FLANGE / BRIDA / BRIDE	ISO 6	ANSI A
DN-Ø (mm)-(inch)	Mod.	CODE	DN-Ø (mm)-(inch)	Mod.	CODE
25 1"	1"	0001M	50 2"	50	000506
32 1"¼	1"¼	1"1/4M	65 2"½	65	000656
40 1"½	1"½	1"1/2M	80 3"	80P	0080P6
50 2"	2"	0002M	80 3"	80E 90°	0080E6
50 2"	2"E 90°	002EM	80 3"	80	000806
65 2"½	2"½	2"1/2M	100 4"	100	001006
80 3"	3"A	003AM	100 4"	100E 90°	0100E6
80 3"	3"C	003CM	125 5"	125	001256
80 3"	3"E 90°	003EM	150 6"	150	001506
100 4"	4"F	004FM	200 8"	200	002006
			250 10"	250	002506
			300 12"	300	003006
			14"/16"	350/400	

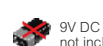


IM-PROG



PN10

Mod.PROG
1-station
IP68
9vDC



9V DC Battery
not included

+ IM-PROG + Opzioni / Options / Opciones / Options

- + **CM4V** + Comando manuale / + Manual override
+ Mando manual / + Commande manuelle

- + **RP3P** + Pilota 3 vie plastico / + 3-way plastic pilot
+ Piloto 3 vías plástico / + Pilote 3 voies plastique



IM-SP3P



✓ Mod.SP3P
3-way
1,0+5,5 bar
PA (nylon)



↔ Mod.SP3B
3-way
1,0+5,5 bar
brass



✓ Mod.CM4V
3-way
Open/Close/Auto

IM-RP3P + **Opzioni** / Options / Opciones / Options

↔ **SP3B** Pilota 3 vie ottone / 3-way brass pilot
Piloto 3 vías latón / Pilote 3 voies laiton

+ **EL-BA** + Solenoide Acqua-tec / + Acqua-tec Solenoid
+ Solenoide Acqua-tec / + Solénoide Acqua-tec



+ **EL** + Solenoide / + Solenoid
+ Solenoide / + Solénoide

24VAC



+ **EL-BI** + Solenoide Bistabile / + Latch solenoid
+ Solenoide Latch / + Solénoide Bistable

9-12VDC

Sostegno Pressione

Pressure Sustaining / Sostenedora de Presión / Mainteneur Amont

mod.IM-SP3P

FILETTO / THREAD / ROSCA / TARAUDE'

BSP F **M**NPT F **N**

FLANGIA / FLANGE / BRIDA / BRIDE

ISO **6**ANSI **A**DN-Ø
(mm)-(inch)

Mod.

CODE
IMISP3P

25 1"

1"

0001M

32 1 1/4"

1 1/4"

1 1/4M

40 1 1/2"

1 1/2"

1 1/2M

50 2"

2"

0002M

50 2"

2"E 90°

002EM

65 2 1/2"

2 1/2"

2 1/2M

80 3"

3"A

003AM

80 3"

3"C

003CM

80 3"

3"E 90°

003EM

100 4"

4"F

004FM

DN-Ø
(mm)-(inch)

Mod.

CODE
IMISP3P

50 2"

50

000506

65 2 1/2"

65

000656

80 3"

80P

0080P6

80 3"

80E 90°

0080E6

80 3"

80

000806

100 4"

100

001006

100 4"

100E 90°

0100E6

125 5"

125

001256

150 6"

150

001506

200 8"

200

002006

250 10"

250

002506

300 12"

300

003006

14"/16"

350/400

Controllo Portata

Flow Rate Control / Reguladora de Caudal / Contrôle de Débit

mod.IM-QP3P

FILETTO / THREAD / ROSCA / TARAUDE'

BSP F **M**NPT F **N**

FLANGIA / FLANGE / BRIDA / BRIDE

ISO **6**ANSI **A**DN-Ø
(mm)-(inch)

Mod.

CODE
IMIQP3P

25 1"

1"

0001M

32 1 1/4"

1 1/4"

1 1/4M

40 1 1/2"

1 1/2"

1 1/2M

50 2"

2"

0002M

50 2"

2"E 90°

002EM

65 2 1/2"

2 1/2"

2 1/2M

80 3"

3"A

003AM

80 3"

3"C

003CM

80 3"

3"E 90°

003EM

100 4"

4"F

004FM

DN-Ø
(mm)-(inch)

Mod.

CODE
IMIQP3P

50 2"

50

000506

65 2 1/2"

65

000656

80 3"

80P

0080P6

80 3"

80E 90°

0080E6

80 3"

80

000806

100 4"

100

001006

100 4"

100E 90°

0100E6

125 5"

125

001256

150 6"

150

001506

200 8"

200

002006

250 10"

250

002506

300 12"

300

003006

14"/16"

350/400

IM-QP3P + **Opzioni** / Options / Opciones / Options

↔ **QP3B** Pilota 3 vie ottone / 3-way brass pilot
Piloto 3 vías latón / Pilote 3 voies laiton

+ **RP3P** + Pilota 3 vie plastico / + 3-way plastic pilot
+ Piloto 3 vías plástico / + Pilote 3 voies plastique



+ **EL** + Solenoide / + Solenoid
+ Solenoide / + Solénoide

24VAC



+ **EL-BI** + Solenoide Bistabile / + Latch solenoid
+ Solenoide Latch / + Solénoide Bistable

9-12VDC

Scarico Rapido

Quick Relief / Alivio Rápido / Décharge Rapide

mod.IM-SR2P

FILETTO / THREAD / ROSCA / TARAUDE'

BSP F **M**NPT F **N**

FLANGIA / FLANGE / BRIDA / BRIDE

ISO **6**ANSI **A**DN-Ø
(mm)-(inch)

Mod.

CODE
IMISR2P

25 1"

1"

0001M

32 1 1/4"

1 1/4"

1 1/4M

40 1 1/2"

1 1/2"

1 1/2M

50 2"

2"

0002M

50 2"

2"E 90°

002EM

65 2 1/2"

2 1/2"

2 1/2M

80 3"

3"A

003AM

80 3"

3"C

003CM

80 3"

3"E 90°

003EM

100 4"

4"F

004FM

DN-Ø
(mm)-(inch)

Mod.

CODE
IMISR2P

50 2"

50

000506

65 2 1/2"

65

000656

80 3"

80P

0080P6

80 3"

80E 90°

0080E6

80 3"

80

000806

100 4"

100

001006

100 4"

100E 90°

0100E6

125 5"

125

001256

150 6"

150

001506

200 8"

200

002006

(*) 250 10"

250

002506

(*) 300 12"

300

003006

14"/16"

350/400

(*) Pilot mod. SR

IM-SR2P + **Opzioni** / Options / Opciones / Options

↔ **SR2B** Pilota 2 vie ottone / 2-way brass pilot
Piloto 2 vías latón / Pilote 2 voies laiton



↔ **SR** Pilota 2 vie ottone / 2-way brass pilot
Piloto 2 vías latón / Pilote 2 voies laiton

Controllo Livello Massimo

mod.IM-GAL

Max level control / Control de nivel máximo / Contrôle niveau maximum

FILETTO / THREAD / ROSCA / TARAUDE'

BSP F **M**NPT F **N**

FLANGIA / FLANGE / BRIDA / BRIDE

ISO **6**ANSI **A**

DN-Ø (mm)-(inch)	Mod.	CODE IMIGALO
25 1"	1"	0001M
32 1"¼	1"¼	1"1/4M
40 1"½	1"½	1"1/2M
50 2"	2"	0002M
50 2"	2"E 90°	002EM
65 2"½	2"½	2"1/2M
80 3"	3"A	003AM
80 3"	3"C	003CM
80 3"	3"E 90°	003EM
100 4"	4"F	004FM

DN-Ø (mm)-(inch)	Mod.	CODE IMIGALO
50 2"	50	000506
65 2"½	65	000656
80 3"	80P	0080P6
80 3"	80E 90°	0080E6
80 3"	80	000806
100 4"	100	001006
100 4"	100E 90°	0100E6
125 5"	125	001256
150 6"	150	001506
200 8"	200	002006
250 10"	250	002506
300 12"	300	003006
14"16"	350/400	



IM-GAL

Mod.GAL
2-way
Ø1/2"
brass/PEMod.GAX
2-way
Ø1/2"
brass/SS

IM-GAL + Opzioni / Options / Opciones / Options



GAX

Galleggiante sfera inox / SS sphere float
Esfera flotador inoxidable / Sphère flotteur inox

EL2

+ Solenoide 2 vie / + 2-way solenoid
+ Solenoide 2 vías / + Solenoide 2 voies

24vAC

Controllo Livello Differenziale

mod.IM-GAD1

Differential level control / Control de nivel diferencial / Contrôle niveau différentiel

FILETTO / THREAD / ROSCA / TARAUDE'

BSP F **M**NPT F **N**

FLANGIA / FLANGE / BRIDA / BRIDE

ISO **6**ANSI **A**

DN-Ø (mm)-(inch)	Mod.	CODE IMIGAD1
25 1"	1"	0001M
32 1"¼	1"¼	1"1/4M
40 1"½	1"½	1"1/2M
50 2"	2"	0002M
50 2"	2"E 90°	002EM
65 2"½	2"½	2"1/2M
80 3"	3"A	003AM
80 3"	3"C	003CM
80 3"	3"E 90°	003EM
100 4"	4"F	004FM

DN-Ø (mm)-(inch)	Mod.	CODE IMIGAD1
50 2"	50	000506
65 2"½	65	000656
80 3"	80P	0080P6
80 3"	80E 90°	0080E6
80 3"	80	000806
100 4"	100	001006
100 4"	100E 90°	0100E6
125 5"	125	001256
150 6"	150	001506
200 8"	200	002006
250 10"	250	002506
300 12"	300	003006
14"16"	350/400	



IM-GAD1

Mod.GAD1
3-way
0+50 cm
brass/PEMod.GAD2
3-way
0+120 cm
brass/SS

IM-GAD1 + Opzioni / Options / Opciones / Options



GAD2

Galleggiante verticale inox / SS vertical float
Flotador vertical inoxidable / Flotteur verticale inox

RP3P

+ Pilota 3 vie plastica / + 3-way plastic pilot
+ Piloto 3 vías plástico / + Pilote 3 voies plastique

EL

+ Solenoide / + Solenoid
+ Solenoide / + Solenoide

24vAC

Controllo Altimetrico

mod.IM-ALT2

Altitude control / Control de altitud / Contrôle altimétrique

FILETTO / THREAD / ROSCA / TARAUDE'

BSP F **M**NPT F **N**

FLANGIA / FLANGE / BRIDA / BRIDE

ISO **6**ANSI **A**

DN-Ø (mm)-(inch)	Mod.	CODE IMIALT2
25 1"	1"	0001M
32 1"¼	1"¼	1"1/4M
40 1"½	1"½	1"1/2M
50 2"	2"	0002M
50 2"	2"E 90°	002EM
65 2"½	2"½	2"1/2M
80 3"	3"A	003AM
80 3"	3"C	003CM
80 3"	3"E 90°	003EM
100 4"	4"F	004FM

DN-Ø (mm)-(inch)	Mod.	CODE IMIALT2
50 2"	50	000506
65 2"½	65	000656
80 3"	80P	0080P6
80 3"	80E 90°	0080E6
80 3"	80	000806
100 4"	100	001006
100 4"	100E 90°	0100E6
125 5"	125	001256
150 6"	150	001506
200 8"	200	002006
250 10"	250	002506
300 12"	300	003006
14"16"	350/400	



IM-ALT2

Mod.ALT2
2-way
1-10 m.c.a.

IM-ALT2 + Opzioni / Options / Opciones / Options



EL2

+ Solenoide 2 vie / + 2-way solenoid
+ Solenoide 2 vías / + Solenoide 2 voies

24vAC



RP2B

+ Pilota riduttore ottone / + Pressure reducing brass pilot
+ Piloto reductor latón / + Pilote réducteur laiton