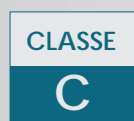


## mod.CPR-B2

Getto singolo  
quadrante bagnato  
Single jet wet dial



Disponibile versione  
acqua calda 30-90°C  
Available version  
for hot water 30-90°C

### Mod. CPR-B2

Getto singolo, quadrante bagnato, lettura diretta. Dotato di anello anti-frode con coperchio orientabile a 360°. Realizzato nelle versioni per acqua fredda (30°C) e acqua calda (90°C) nei calibri  $\varnothing$  15 e 20 mm (1/2"-3/4"). Garanzia di lunga durata.

### Mod. CPR-B2

Single jet, wet dial, direct reading with anti-fraud ring with 360° rotating lid. Produced in the versions for cold water (30°C) and hot water (90°C) in the diameters 15 and 20 mm (1/2" - 3/4"). Long durability guaranteed.

### Mod. CPR-B2

Chorro único, esfera húmeda, lectura directa. Equipado de anillo antifraude con tapa orientable a 360°. Producido en las versiones para agua fría (30°C) y caliente (90°C) en los calibres  $\varnothing$  15 y 20 mm (1/2" - 3/4"). Garantía de larga duración.

### Mod. CPR-B2

Einzelwasserstrahl, nasses Ziffernblatt, Direktablesung. Ausgestattet mit anti-Betrug Ring mit richtbarem Deckel 360°. Produziert in den Versionen Kaltwasser (30°C) Warmwasser (90°C) in den Durchmessern 15 und 20 mm (1/2 Zoll-3/4 Zoll). Garantiert lange Haltbarkeit.

### Mod. CPR-B2

Jet unique, cadran noyé à lecture directe. Equipé d'une bague d'inviolabilité avec couvercle orientable à 360°. Disponible en la version pour eau froide (30°C) ou eau chaude (90°C) en 2 calibres 15 ou 20 mm (1/2" ou 3/4"), fiabilité dans le temps.

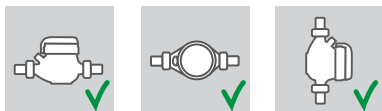
### Мод. CPR-B2

Одноструйный счетчик с мокрым квадрантом и прямым считыванием, антимагнитным кольцом и вращающейся на 360° крышкой. Выпускается в версиях для холодной (30°C) и горячей (90°C) воды диаметрами условного прохода 15 и 20 мм (1/2" – 3/4"). Гарантия долговечности.

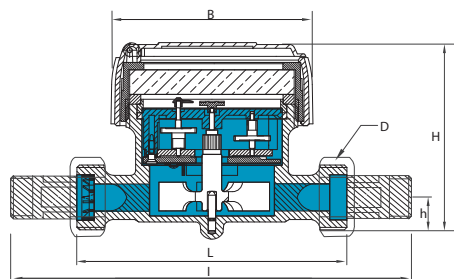
## Caratteristiche tecniche - Technical features

Calibro Size	DN	mm in	15 (1/2")	20 (3/4")
Portata Max Max Flow Rate	Q <sub>max</sub>	m³/h	3	5
Portata nominale Nominal Flow Rate	Q <sub>n</sub>	m³/h	1,5	2,5
Portata di transizione Transitional flow rate	Q <sub>t</sub> ±2%	l/h	22,5	37,5
Portata minima Min flow rate	Q <sub>min</sub> ±5%	l/h	15	25
Lettura minima Min reading		l	0,05	
Lettura massima Max reading		m³	99.999	
Pressione max ammissibile Max admissible pressure MAP		bar	16	

### Posizione d'installazione Installation position

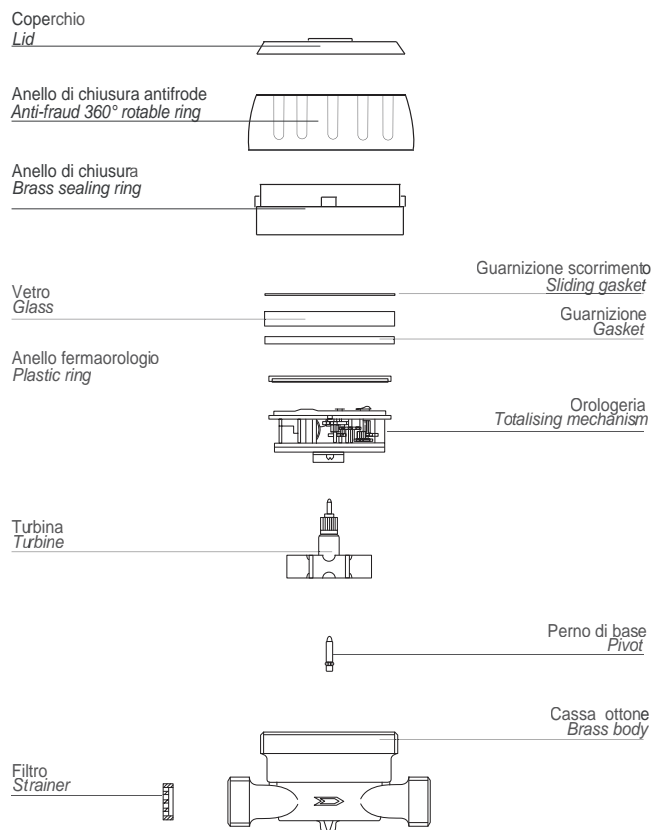


### Dimensioni e pesi - Dimensions and Weights



Calibro Size		mm in	15 (1/2")	20 (3/4")
L		mm	110	130
l		mm	190	228
H		mm	80	80
h		mm	18	18
B		mm	80	80
D	Filettatura Threading	in	3/4"	1"
Pesi Weight	con raccordi with unions	kg	0,76	0,93
	senza raccordi without unions	kg	0,62	0,69

Filettatura - Threading EN ISO 228-1:2000



### Versione base - Basic version

- Classe C-H/B-V CEE75/33 ISO4064
- Disponibile in versione per acqua fredda 0°C-30°C e per acqua calda 30°C-90°C
- Trasmissione meccanica
- Lettura diretta su 5 rulli numeratori
- Quadrante bagnato
- Coperchio girevole

- Class C-H/B-V CEE75/33 ISO4064
- Available for cold water 0° C-30° C and for hot water 30°C-90°C
- Mechanical transmission
- Direct reading on 5 numeric rolls
- Wet dial
- Rotating lid