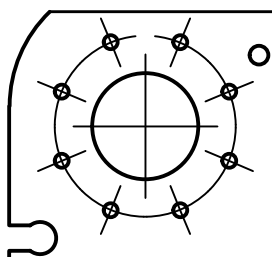
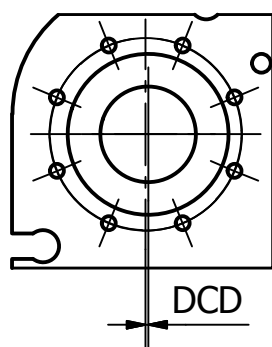


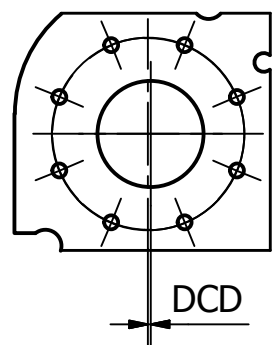
F1-F4 AND B1-B4  
FLANGED DN100  
DIN2632-2633  
CLADDED OR  
RUBBERLINED



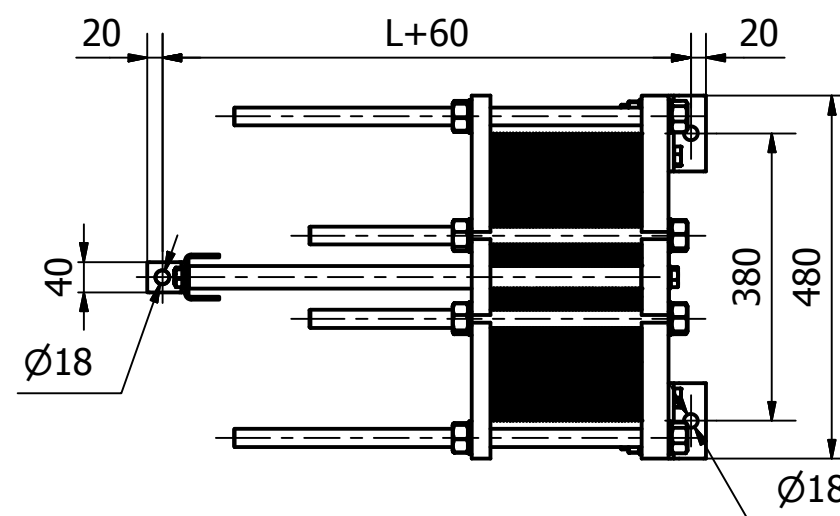
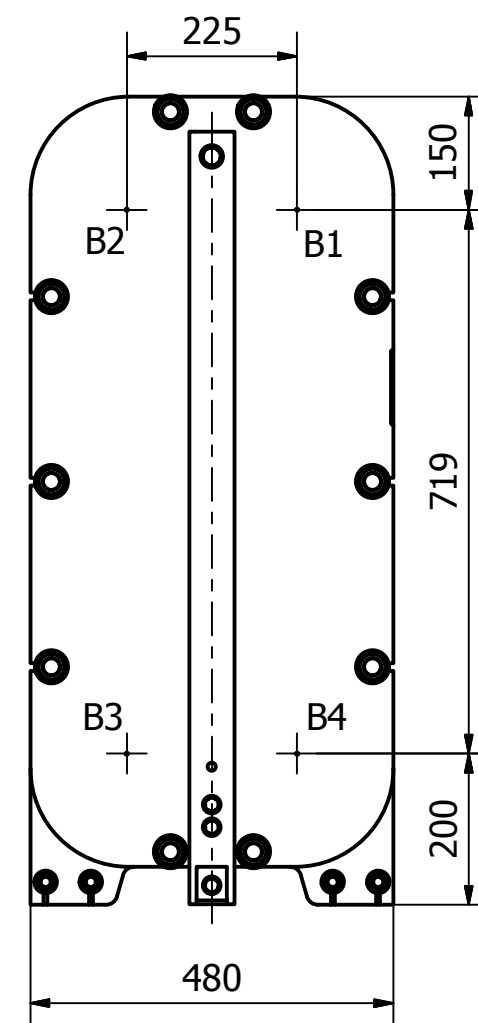
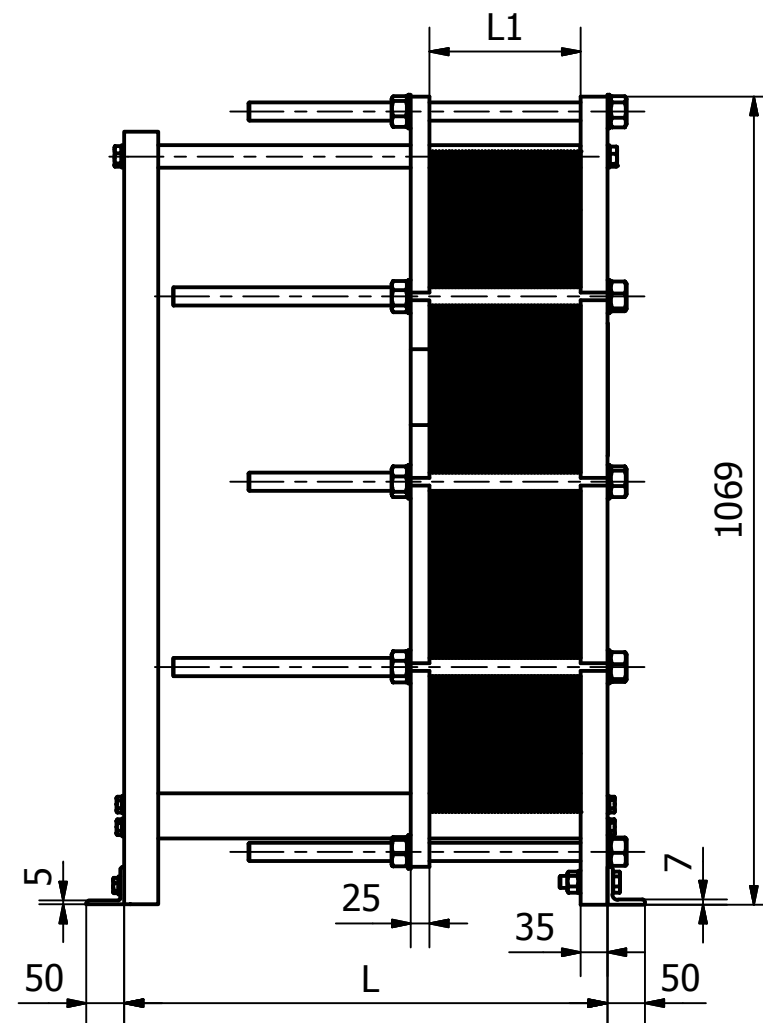
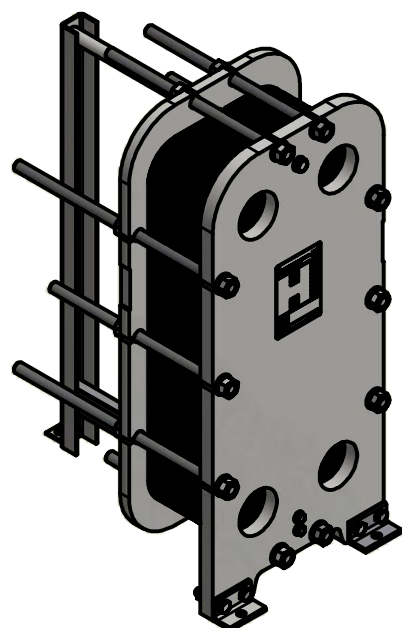
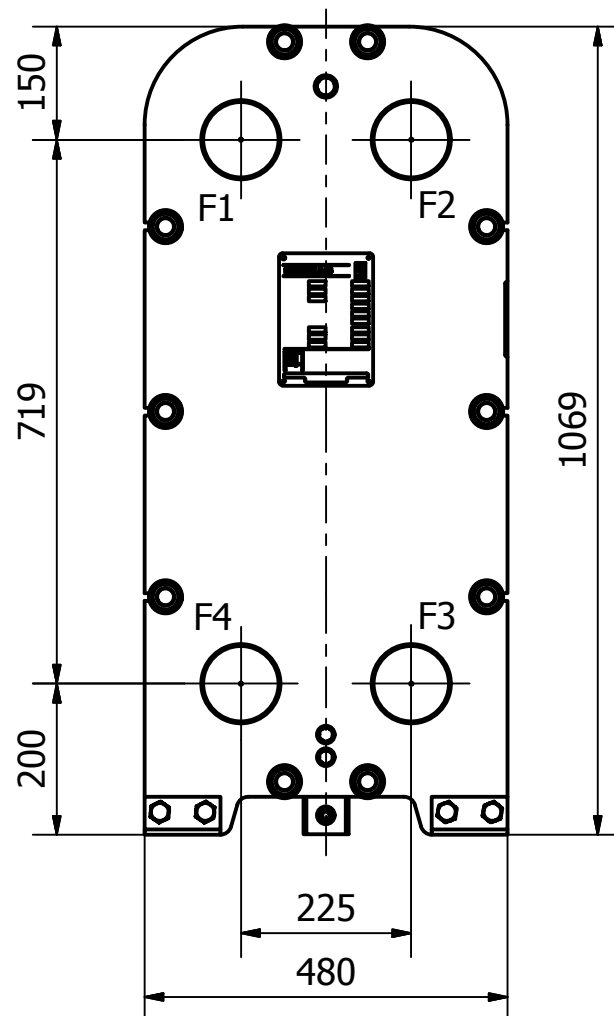
F1-F4  
FLANGE DN100  
DIN2632-2633  
UNCLADDED

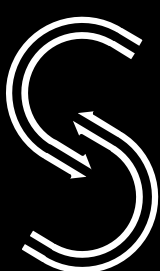


F1-F4  
FLANGE 4"  
ANSI CL150  
CLADDED OR  
RUBBERLINED  
DCD 2,5 MM



F1-F4  
FLANGE 4"  
ANSI CL150  
UNCLADDED  
DCD 2,5 MM



	Dimensions without tolerance	Designed by LGK	Date 26-03-2009	Approved by AGSO	Date 11-10-2018	Rev. no. 05	Revision Text HEAD WAS 30 MM, STAYBOLTS MOVED
	ISO 2768-m	<b>SONDEX</b> Description: S21a/S22 IG PN10 DN100 DIM. DRAWING LENGTH 400-1000 MM FEA					
	ISO projektion	Jernet 9 DK-6000 Kolding					
		Rev. date 05-10-2018	Rev. by AGSO	Drawing no. S21a-S22IGPN10DN100L400-1000-FEA	Sheet 1 / 1		