

VASO INERZIALE INOX

STAINLESS STEEL 316L DOMESTIC HOT WATER ACCUMULATION TANK



APPLICATION

Domestic hot water storage.

MATERIAL

Stainless Steel 316 L suitable for domestic hot water

INSULATION

- HARD: High thermal insulation with ecological polyurethane hard foam.

- SOFT: NOFIRE® polyester fleece 100% made of recyclable material, with high thermal insulation. Fire resistance class B-s2d0 according to EN 13501. Grey PVC external lining.

CATHODE PROTECTION

Magnesium anode - Models > 1500 n° 2 magnesium anodes.

DRAIN

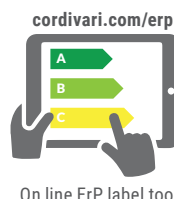
External confluence through drain connection.

WARRANTY

5 years - See general sales conditions and warranty

ACCESSORIES AND SPARE PARTS

See Accessories section for the entire list.



VASO INERZIALE XB

ENERGY EFFICIENCY CLASS



Model	HARD FOAM insulation	Art. Nr.	
200	3060052140435		B
300	3060052140436		B
500	3060052140437		C



VASO INERZIALE XC

ENERGY EFFICIENCY CLASS



Model	DISMOUNTABLE SOFT FLEECE insulation	Art. Nr.	
800	3060052140441		C
1000	3060052140442		C
1300	3060052140432		C
1500	3060052140433		C
2000	3060052140434		C
2500	3060052140410		
3000	3060052140412		
4000	3060052140414		
5000	3060052140416		

ACCESSORIES

ELECTRIC IMMERSION HEATERS

Mod.	MONOPHASE		
	1,5 kW	2 kW	3 kW
	52400000000051	52400000000052	52400000000053
	Ignition time from 10 °C to 45 °C with electric immersion heaters [min]		
200	49	87	65
300	76	136	102
500	127	228	171
800	178	318	239
1000	243	436	327
1500	288	516	387
2000	443	793	595
2500	577	1033	775
3000	577	1033	775
4000	797	1428	1071
5000	1040	1864	1398

THREEPHASE				
4 kW	5 kW	6 kW	9 kW	12 kW
52400000000047	52400000000048	52400000000049	52400000000050	52400000000031
Ignition time from 10 °C to 45 °C with electric immersion heaters [min]				
//	//	//	//	//
//	//	//	//	//
//	//	//	//	//
//	//	//	//	//
163	131	109	73	54
194	155	129	86	65
297	238	198	132	99
387	310	258	172	129
387	310	258	172	129
535	428	357	238	178
699	559	466	311	233

"Easy Control" Electronic Display-mounted on tank

ART. NR.	FOR MODELS
5005000310002	WC
5005000310003	WB

Thermometer

Art. Nr.
5032240000107
5 units box

Titanium electronic anode (for stainless steel calorifiers)

See Accessories section

VASO INERZIALE INOX

STAINLESS STEEL 316L DOMESTIC HOT WATER ACCUMULATION TANK

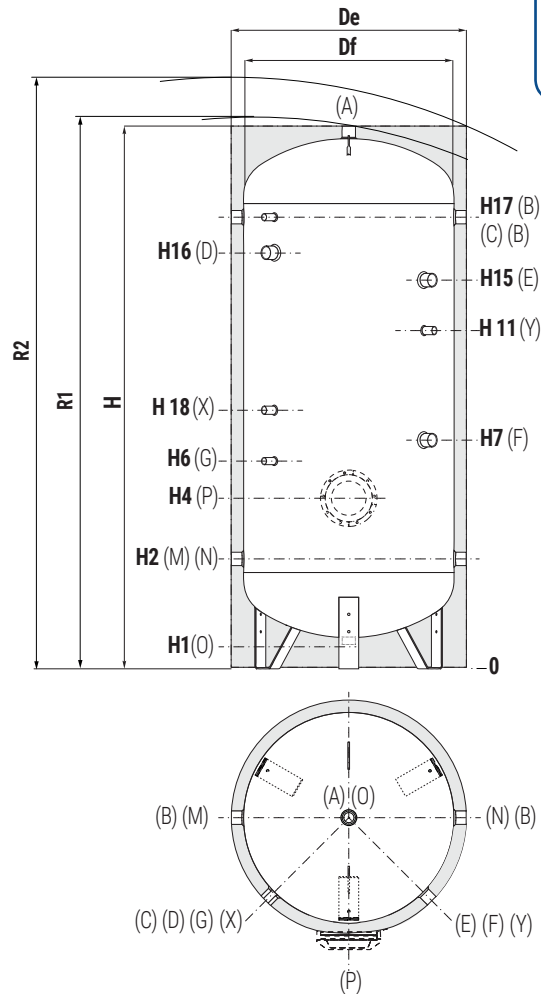
STORAGE

P _{max}	T _{max}
6 bar	95 °C



CORDIVARI Lab

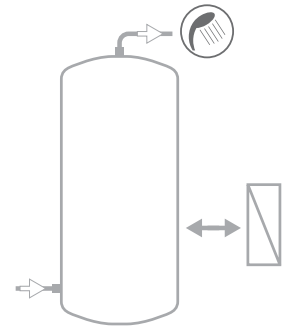
TÜV Rheinland Energie und Umwelt GmbH states that test procedures and Cordivari LAB are certified conforming to European standard EN 15332, as indicated by Ecodesign ErP Directive.



COMPLETE YOUR SYSTEM WITH THE NEW PRS MODULE (FOR IMMEDIATE DHW PREPARATION)



SEE HYDRONIC SECTION



A	Domestic hot water outlet
B	Recirculation / Domestic hot water outlet
C	Connection for instrumentation 1/2" F
D	Connection for electric immersion heater
E	Connection for 2nd magnesium anode/Titanium electronic anode 1"1/4 F (only for models > 1500)
F	Connection for magnesium anode/ Titanium electronic anode 1" 1/4 F
G	Connection for instrumentation 1/2" F
M	Domestic cold water circuit inlet
N	Alternative domestic cold water circuit inlet or connection for more boilers
O	Drain
P	Flange (>1000)
X	Connection for titanium electronic anode 3/4" F (>1500)
Y	Connection for titanium electronic anode 3/4" F (> 3000)

Model	Volume [lt]	Df (vers. XC) [mm]	De (vers. XC) [mm]	De (vers. XB) [mm]	H	R1	R2	H1	H2	H4	H6	H7	H11
200	191	//	//	550	1451	-	1560	81	316	341	511	701	//
300	293	//	//	650	1569	-	1700	149	409	434	604	794	//
500	502	//	//	750	1861	-	2010	141	426	451	621	811	//
800	760	790	1010	//	1943	2040	2190	113	428	483	623	863	//
1000	902	800	1020	//	2212	2300	2440	112	437	492	632	922	//
1300	1274	950	1210	//	2193	2310	2510	118	433	488	628	918	//
1500	1399	1000	1260	//	2177	2310	2520	112	447	502	642	982	//
2000	2019	1250	1510	//	2099	2300	2590	134	529	574	714	1004	//
2500	2320	1250	1350	//	2299	2490	2670	134	529	574	714	954	//
3000	2925	1250	1350	//	2799	2960	3110	134	529	574	714	1014	//
4000	3776	1400	1500	//	2872	3060	3250	117	557	602	742	1022	1657
5000	4995	1600	1700	//	2909	3150	3370	94	564	609	749	1019	1664

Model	H15	H16	H17	H18	P
	[mm]				
200	//	1066	1176	//	//
300	//	1159	1269	//	//
500	//	1380	1536	//	//
800	//	1382	1538	//	//
1000	//	1642	1797	//	//
1300	//	1638	1793	//	Øi170/Øe240
1500	1552	1602	1757	//	Øi170/Øe240
2000	1524	1473	1629	1159	Øi170/Øe240
2500	1794	1710	1879	1179	Øi170/Øe240
3000	2294	2210	2369	1279	Øi170/Øe240
4000	2302	2225	2397	1307	Øi170/Øe240
5000	2319	2159	2404	1314	Øi170/Øe240

O	M N B	C G	F	E	D	A
Connections F						
3/4"	1"1/4	1/2"	1"1/4	//	1"1/2	1"1/4
3/4"	1"1/4	1/2"	1"1/4	//	1"1/2	1"1/4
3/4"	1"1/4	1/2"	1"1/4	//	1"1/2	1"1/4
3/4"	1"1/4	1/2"	1"1/4	//	1"1/2	1"1/2
3/4"	1"1/2	1/2"	1"1/4	//	2"	1"1/2
1"	1"1/2	1/2"	1"1/4	//	2"	2"
1"	1"1/2	1/2"	1"1/4	1"1/4	2"	2"
1"	2"	1/2"	1"1/4	1"1/4	2"	2"
1"	2"	1/2"	1"1/4	1"1/4	2"	2"
1"	2"	1/2"	1"1/4	1"1/4	2"	2"
1"	2"	1/2"	1"1/4	1"1/4	2"	2"