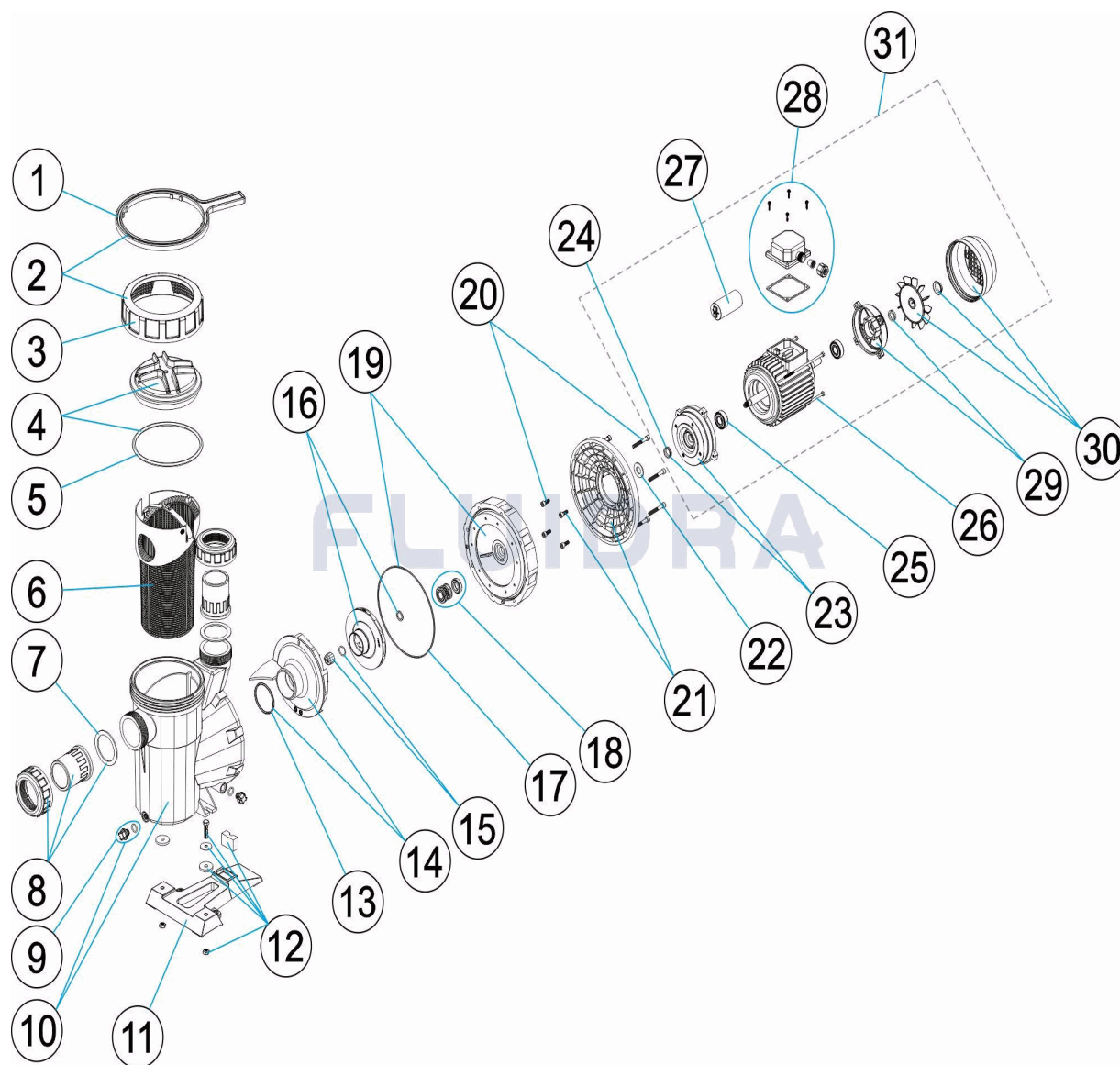


CODE **25480, 25481, 25482, 25483, 25484, 25485, 25486, 25487, 25488, 25489, 25490, 25491, 25492**

DESCRIPTION: **NAUTILUS PUMP**



ENGLISH

POS	CODE	DESCRIPTION	QUANTITY	POS	CODE	DESCRIPTION	QUANTITY
1	4404130103	LID SPANNER		14	* 4405010116	DIFFUSOR 1 HP - 2 HP	
2	4408031606	NUT AND SPANNER		14	* 4405010117	DIFFUSOR 2,5 - 3 HP	
3	4408010101	LID LOCKING NUT		15	4405010134	IMPELLER COVER M8 LEFT	
4	4405010702	PRE-FILTER COVER		16	* 4405010723	IMPELLER 1/3 HP 50 HZ	
5	4405010178	O' RING D 151,7X6,99		16	* 4405010716	IMPELLER 1/3 HP 60 HZ	
6	4405010105	PRE-FILTER BASKET		16	* 4405010591	IMPELLER ½ (II) HP	
7	4405010179	INLET GASKET 72X55X2,5		16	* 4405010667	IMPELLER ½ (II) HP 60 HZ	
8	* 4405010106	UNION FITTINGS <= 1 HP		16	* 4405010592	IMPELLER ½ (III) HP	
8	* 4405010107	UNION FITTINGS 1,5 HP - 2,5 HP		16	* 4405010668	IMPELLER ½ (III) HP 60 HZ	
9	4404121107	PLUG 1/4"		16	* 4405010593	IMPELLER ¾ (II) HP	
10	4405010109	PUMP HOUSING		16	* 4405010669	IMPELLER ¾ (II) HP 60 HZ	
11	4405010207	PUMP BASE		16	* 4405010594	IMPELLER ¾ (III) HP	

\* SEE OBSERVATIONS SHEET

CODE **25480, 25481, 25482, 25483, 25484, 25485, 25486, 25487, 25488, 25489, 25490, 25491, 25492**

DESCRIPTION: **NAUTILUS PUMP**

12	4405010206	PUMP BASE FITTINGS	16	* 4405010670	IMPELLER ¾ (III) HP 60 HZ
13	4405010161	O' RING D. 56,7X3,5	16	* 4405010595	IMPELLER 1 (II) HP
14	* 4405010115	DIFFUSEUR <=0,75 HP	16	* 4405010671	IMPELLER 1 (II) HP 60 HZ
16	* 4405010596	IMPELLER 1 (III) HP	26	* 4405010144	MOTOR TIES 0,75 - 1 HP
16	* 4405010672	IMPELLER 1 (III) HP 60 HZ	26	* 4405010145	MOTOR TIES 1,5 - 3 HP III
16	* 4405010597	IMPELLER 1,5 (II) HP	26	* 4405010169	MOTOR TIES (90) 3 HP II
16	* 4405010673	IMPELLER 1,5 (II) HP 60 HZ	27	* 4405010149	CONDENSER 12 UF 1/2 CV
16	* 4405010598	IMPELLER 1,5 (III) HP	27	* 4405020121	CONDENSER 14 UF 3/4 CV
16	* 4405010674	IMPELLER 1,5 (III) HP 60 HZ	27	* 4405020122	CONDENSER 16 UF 1 CV
16	* 4405010599	IMPELLER 2 (II) HP	27	* 4405010150	CONDENSER 18 UF 1,5 CV
16	* 4405010675	IMPELLER 2 (II) HP 60 HZ	27	* 4405010174	CONDENSER 32 ?F 2 CV
16	* 4405010600	IMPELLER 2 (III) HP	27	* 4405010175	CONDENSER 40 ?F 2,5-3 CV
16	* 4405010676	IMPELLER 2 (III) HP 60 HZ	28	* 4405010154	TERMINAL BOX ASSEMBLY C. 63-71 II
16	* 4405010601	IMPELLER 3 (II) HP	28	* 4405010155	TERMINAL BOX ASSEMBLY (C 80-90) II (ANC
16	* 4405010677	IMPELLER 3 (II) HP 60 HZ	28	* 4405010156	TERMINAL BOX COVER C 63-71 III
16	* 4405010602	IMPELLER 3 (III) HP	28	* 4405010157	TERMINAL BOX ASSEMBLY C. 80-90 III
16	* 4405010678	IMPELLER 3 (III) HP 60 HZ	29	* 4405010140	REAR MOTOR COVER 1/3 A 1/2 HP
17	4405010160	MOTOR CLAMP GASKET	29	* 4405010141	REAR MOTOR COVER 3/4 A 1 HP
18	4405011401	MECHANICAL SEAL D-15	29	* 4405010142	REAR MOTOR COVER 1,5 - 3 HP III
19	4405010132	MECHANICAL SEAL PLATE	29	* 4405010168	REAR MOTOR COVER 2,5 - 3 HP II
20	4405010133	FLANGE SCREWS	30	* 4405010146	FAN COVER ASSEMBLY 0,5 HP
21	* 4405010130	MOTOR CLAMP <= 1 HP	30	* 4405010147	FAN COVER ASSEMBLY 0,75 - 1 HP
21	* 4405010131	MOTOR CLAMP 1,5 HP - 3HP	30	* 4405010148	FAN COVER ASSEMBLY 1,5 - 2 - 3 HP III
22	* 4405010163	DEFLECTOR WASHER C.71 1/2-1 HP	30	* 4405010170	FAN COVER ASSEMBLY 3 HP II
22	* 4405010164	DEFLECTOR WASHER C.80 1,5-3 HP	31	* 20597R0475	MOTOR 1/2 HP II
23	* 4405010137	FRONT MOTOR COVER 0,5 HP	31	* 20598R0475	MOTOR 1/2 HP III
23	* 4405010138	FRONT MOTOR COVER 0,75 - 1 HP	31	* 20599R0475	MOTOR 3/4 HP II
23	* 4405010139	FRONT MOTOR COVER 1,5 3 HP III	31	* 20600R0475	MOTOR 3/4 HP III
23	* 4405010167	FRONT MOTOR COVER 2,5 3 HP II	31	* 20601R0475	MOTOR 1 HP II
24	* 4405010158	V-RINGS 0,5 HP - 1 HP	31	* 20602R0475	MOTOR 1 HP III
24	* 4405010159	V-RINGS 1,5 HP - 3 HP	31	* 20603R0575	MOTOR 1,5 HP II
24	* 4405010176	V-RINGS VA-2,5 - 3 HP II	31	* 20604R0575	MOTOR 1,5 HP III
25	* 4405010135	MOTOR BEARINGS < 1 HP	31	* 20605R0475	MOTOR 2 HP II
25	* 4405010136	MOTOR BEARINGS 1,5 HP - 3 HP	31	* 20606R0475	MOTOR 2 HP III
25	* 4405010171	BEARINGS ASSEMBLY 6205 2RS 3,5HP	31	* 22341R0475	MOTOR 3 HP II
26	* 4405010143	MOTOR TIES C. 63	31	* 20607R0475	MOTOR 3 HP III

CODE **25480, 25481, 25482, 25483, 25484, 25485, 25486, 25487, 25488, 25489, 25490, 25491, 25492**

DESCRIPTION: **NAUTILUS PUMP**

## OBSERVATIONS

POS	CODE	OBSERVATIONS
8	* 4405010106	FOR: 25480, 25481, 25482, 25483, 25484, 25485, 25486
8	* 4405010107	FOR: 25487, 25488, 25489, 25490, 25491, 25492
14	* 4405010115	FOR: 25481, 25482, 25483, 25484
14	* 4405010116	FOR: 25485, 25486, 25487, 25488, 25489, 25490
14	* 4405010117	FOR: 25491, 25492
16	* 4405010723	FOR: 25480 50 HZ
16	* 4405010716	FOR: 25480 60 HZ
16	* 4405010591	FOR: 25481 50 HZ
16	* 4405010667	FOR: 25481 60 HZ
16	* 4405010592	FOR: 25482 50 HZ
16	* 4405010668	FOR: 25482 60 HZ
16	* 4405010593	FOR: 25483 50 HZ
16	* 4405010669	FOR: 25483 60 HZ
16	* 4405010594	FOR: 25484 50 HZ
16	* 4405010670	FOR: 25484 60 HZ
16	* 4405010595	FOR: 25485 50 HZ
16	* 4405010671	FOR: 25485 60 HZ
16	* 4405010596	FOR: 25486 50 HZ
16	* 4405010672	FOR: 25486 60 HZ
16	* 4405010597	FOR: 25487 50 HZ
16	* 4405010673	FOR: 25487 60 HZ
16	* 4405010598	FOR: 25488 50 HZ
16	* 4405010674	FOR: 25488 60 HZ
16	* 4405010599	FOR: 25489 50 HZ
16	* 4405010675	FOR: 25489 60 HZ
16	* 4405010600	FOR: 25490 50 HZ
16	* 4405010676	FOR: 25490 60 HZ
16	* 4405010601	FOR: 25491 50 HZ
16	* 4405010677	FOR: 25491 60 HZ
16	* 4405010602	FOR: 25492 50 HZ
16	* 4405010678	FOR: 25492 60 HZ
21	* 4405010130	FOR: 25480, 25481, 25482, 25483, 25484, 25485, 25486
21	* 4405010131	FOR: 25487, 25488, 25489, 25490, 25491, 25492
22	* 4405010163	FOR: 25480, 25481, 25482, 25483, 25484, 25485, 25486
22	* 4405010164	FOR: 25487, 25488, 25489, 25490, 25491, 25492
23	* 4405010137	FOR: 25480, 25481, 25482
23	* 4405010138	FOR: 25483, 25484, 25485, 25486
23	* 4405010139	FOR: 25487, 25488, 25489, 25490, 25492
23	* 4405010167	FOR: 25491
24	* 4405010158	FOR: 25480, 25481, 25482, 25483, 25484, 25485, 25486
24	* 4405010159	FOR: 25487, 25488, 25489, 25490, 25492
24	* 4405010176	FOR: 25491
25	* 4405010135	FOR: 25480, 25481, 25482, 25483, 25484, 25485, 25486
25	* 4405010136	FOR: 25487, 25488, 25489, 25490, 25492
25	* 4405010171	FOR: 25491
26	* 4405010143	FOR: 25480, 25481, 25482
26	* 4405010144	FOR: 25483, 25484, 25485, 25486
26	* 4405010145	FOR: 25487, 25488, 25489, 25490, 25492
26	* 4405010169	FOR: 25491

\* SEE OBSERVATIONS SHEET

CODE **25480, 25481, 25482, 25483, 25484, 25485, 25486, 25487, 25488, 25489, 25490, 25491, 25492**

DESCRIPTION: **NAUTILUS PUMP**

27	* 4405010149	FOR: 25480, 25481
27	* 4405020121	FOR: 25483
27	* 4405020122	FOR: 25485
27	* 4405010150	FOR: 25487
27	* 4405010174	FOR: 25489
27	* 4405010175	FOR: 25491
28	* 4405010154	FOR: 25480, 25481, 25483, 25485
28	* 4405010155	FOR: 25487, 25489, 25491
28	* 4405010156	FOR: 25482, 25484, 25486
28	* 4405010157	FOR: 25488, 25490, 25492
29	* 4405010140	FOR: 25480, 25481, 25482
29	* 4405010141	FOR: 25483, 25484, 25485, 25486
29	* 4405010142	FOR: 25487, 25488, 25489, 25490, 25492
29	* 4405010168	FOR: 25491
30	* 4405010146	FOR: 25480, 25481, 25482
30	* 4405010147	FOR: 25483, 25484, 25485, 25486
30	* 4405010148	FOR: 25487, 25488, 25489, 25490, 25492
30	* 4405010170	FOR: 25491
31	* 20597R0475	FOR: 25480, 25481
31	* 20598R0475	FOR: 25482
31	* 20599R0475	FOR: 25483
31	* 20600R0475	FOR: 25484
31	* 20601R0475	FOR: 25485
31	* 20602R0475	FOR: 25486
31	* 20603R0575	FOR: 25487
31	* 20604R0575	FOR: 25488
31	* 20605R0475	FOR: 25489
31	* 20606R0475	FOR: 25490
31	* 22341R0475	FOR: 25491
31	* 20607R0475	FOR: 25492